

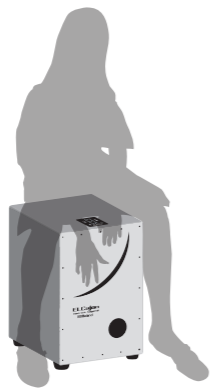
What Is "ELCajon"

The Roland ELCajon (Electronic Layered Cajon) is a cajon with a new concept: "electronic sound layered on acoustic sound" using proprietary Roland sensor and sound generation technology.

The ELCajon opens up fresh musical possibilities for the cajon, and is sure to inspire you with new performance ideas and new musical expressions.

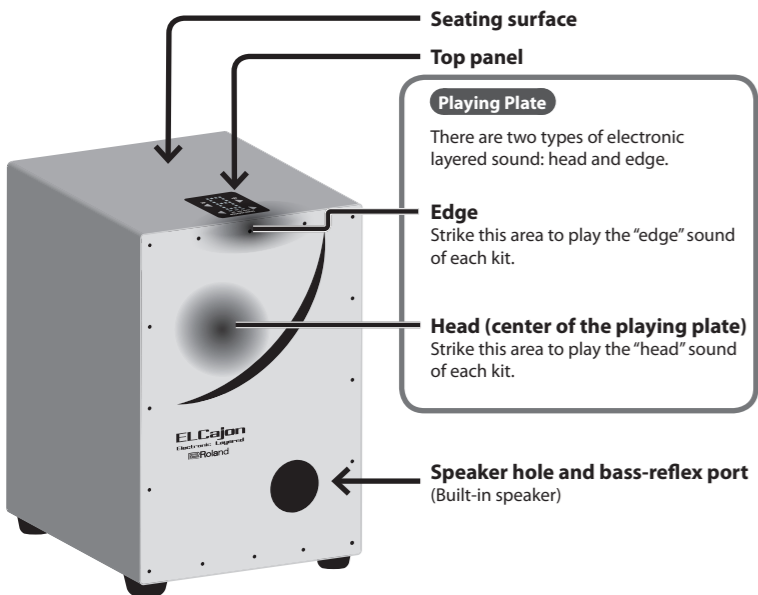
Main features

- You can layer a variety of electronic sounds while taking advantage of the distinctive resonance that's original to the cajon.
- Even when used on its own, the ELCajon lets you enjoy powerful sound without having to connect an external mic or PA system.
- Lightweight and easy to transport, the ELCajon can be operated on batteries, allowing you to perform anywhere you like, including outdoors.
- When performing in a large hall, you can use the ELECTRONIC SOUND OUT jack to obtain even more powerful sound.
- Connect an audio player to the MIX IN jack, and you can use the ELCajon as a speaker or a seat when you're not playing it.



Your own hands will let you draw out the fullest potential of the ELCajon.

Panel Descriptions



Seating surface

Top panel

Playing Plate

There are two types of electronic layered sound: head and edge.

Edge

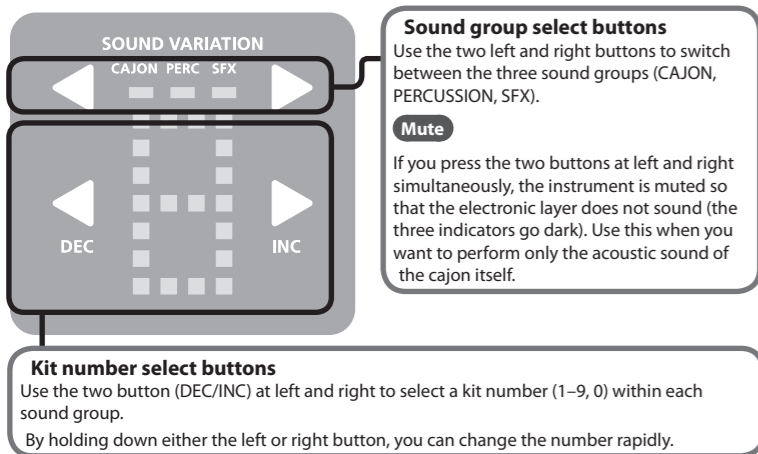
Strike this area to play the "edge" sound of each kit.

Head (center of the playing plate)

Strike this area to play the "head" sound of each kit.

Speaker hole and bass-reflex port
(Built-in speaker)

Top panel



Sound group select buttons

Use the two left and right buttons to switch between the three sound groups (CAJON, PERCUSSION, SFX).

Mute

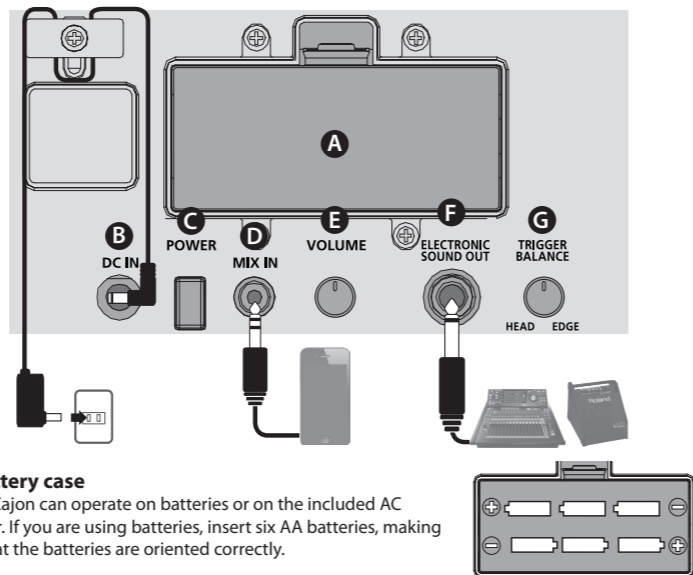
If you press the two buttons at left and right simultaneously, the instrument is muted so that the electronic layer does not sound (the three indicators go dark). Use this when you want to perform only the acoustic sound of the cajon itself.

Kit number select buttons

Use the two button (DEC/INC) at left and right to select a kit number (1-9, 0) within each sound group.

By holding down either the left or right button, you can change the number rapidly.

Rear panel



A Battery case

The ELCajon can operate on batteries or on the included AC adaptor. If you are using batteries, insert six AA batteries, making sure that the batteries are oriented correctly.

* The battery life is approximately 12 hours for typical performance use. **When the batteries run low, "L" blinks in the display.** Replace the battery as soon as possible.

* If you handle batteries improperly, you risk explosion and fluid leakage. Make sure that you carefully observe all of the items related to batteries that are listed in "USING THE UNIT SAFELY" and "IMPORTANT NOTES" (leaflet "USING THE UNIT SAFELY").

B DC IN jack

Connect the included AC adaptor here.

* To prevent the inadvertent disruption of power to your unit (should the plug be pulled out accidentally), and to avoid applying undue stress to the jack, anchor the power cord using the cord hook, as shown in the illustration.

C [POWER] switch

This turns the power on/off.

D MIX IN jack

Connect your audio player or other audio source here. Sound from the connected device comes out of the ELCajon's built-in speaker.

E [VOLUME] knob

Adjusts the volume of the built-in speaker.

F ELECTRONIC SOUND OUT jack

The electronic layer sound of each kit is output from this jack to an external amp or PA system. Use this mainly when you want to boost the low frequency sound.

* When connecting the device to the ELECTRONIC SOUND OUT jack, be sure to **turn on the power in the order of the ELCajon first, and then the connected system.** Powering-on in the incorrect order may cause malfunctions or damage. When turning the power off, **power-off the connected system first, and then the ELCajon.**

G [TRIGGER BALANCE] knob

Adjusts the head/edge sensor balance for the electronic sound. Turning the knob toward "HEAD" makes it easier to play the head sound; turning it toward "EDGE" makes it easier to play the edge sound.

Tip

- If the edge sound is heard when you strike the head, it is often the case that your palm or wrist is unintentionally striking near the edge at the same time that your fingertips strike the head. In this case, curve your fingers beyond the wrist so that they strike the head surface.

(Rear panel) Carrying handle

To transport the ELCajon, hold it by this carrying handle located on the rear panel.

* You can use a commercially available cajon carrying case (50 x 30 x 30 cm) to transport the ELCajon.

THRESHOLD setting

If you simultaneously press both the left and right buttons indicated in the illustration, the number blinks, allowing you to adjust the force of the strike on the striking surface that will play the sound of the electronic layer (1-9).

With a high THRESHOLD setting, the electronic layer sound is heard only when you play a strong strike.

When you have finished making the setting, simultaneously press both the left and right buttons once again.

* The THRESHOLD setting returns to the default value when you turn off the power.

How to Play

When using the ELCajon in a tilted position, take care that it does not tip over, and that the connectors are not damaged.

1. Experience the sound as an acoustic cajon

In principle, a cajon is an instrument that can be struck anywhere to produce sound. However in order to take full advantage of the ELCajon as a musical instrument, we recommend the following performance techniques.

Strikes	Explanation
Head Low	Use the entire palm of your hand to strike near the center of the striking surface; this produces a low sound with a resonant decay. Memo To produce a sharper low sound with minimal decay, round your hand so that the tips of your five fingers strike the surface simultaneously.
Head Touch	Use individual fingertips to softly strike near the center of the striking surface as though you were playing a keyboard; this produces small, subtle low sounds.
Edge High	Use the entire length of four fingers (omitting the thumb) to strike the upper part of the striking surface. This produces a sharp sound that is reminiscent of a snare drum, and is used frequently. The ELCajon has snare wires, producing a buzz-like acoustic sound that responds to the force of your strike.
Edge Touch	Use your fingertips to gently strike the upper part of the striking surface as if you were playing a keyboard. This produces a soft and subtle medium-high sound. Unlike the Edge High strike, this strike is often used as ghost notes (notes that keep the rhythm going, or that fill in between low and high sounds).
Slap	Bend your hand into an "L" shape at the knuckles, and using four fingers (omitting the thumb) where they join the palm of your hand, strongly and rapidly strike the upper edge of the striking surface. This produces an accented high-pitched sound.

2. Play sounds of the electronic layer

Use the top panel buttons to select the electronic layer sound.

Tips

- The ELCajon assigns separate sounds to the head and edge. Like the acoustic sounds, the sounds of the electronic layer also change in response to your striking force.
- The electronic sounds are set to not sound when you use head touch or edge touch strikes to play softly and delicately.
- Use the [VOLUME] knob to adjust the volume of the electronic layer.

Sound Group

Group	Explanation
CAJON	This group of kits blends the acoustic sound of the cajon itself with the electronic layer sound, with the goal of creating a single cajon sound. The electronic layer sounds in this group are created as variations of the cajon's resonant cords.
PERCUSSION	The kits in this group contain electronic layer sounds that supplement the acoustic sound of the cajon itself with a variety of percussion instruments that are different from cajon sounds. Using just the ELCajon by itself, these kits let you play a variety of percussion instruments from different genres, making it possible to go beyond the traditional framework or definitions of a cajon.
SFX	This group contains kits containing a variety of sound effects suitable for various styles of music. * If you want to lay down a strong foundation of four beats per measure, as in dance music, you can get a more powerful sound by connecting the ELECTRONIC SOUND OUT jack to an external amp or PA system.

Kit List

CAJON

	Kit Name	Head Sound	Edge Sound
1	Ambient Cajon	Cajon Bass Reverb	Cajon Reverb
2	Plain Cajon	Cajon Foot	Cajon Side
3	Soft Cajon	Cajon Thumb Lo	Cajon Thumb Hi
4	Slap Cajon	Cajon Bass Reverb	Cajon Slap
5	Burst Cajon	Cajon Thumb Lo	Flamenco Clap
6	Cajon & Splash	Cajon Foot	Shiny Splash
7	Cajon & Cross Stick	Cajon Thumb Lo	Cross Stick
8	Wood Snare	Vintage Kick	Wood Snare
9	Buzzy Snare	Heavy Kick	Buzzy Snare
0	Steel Snare	Plugged Kick	Steel Snare

PERCUSSION

	Kit Name	Head Sound	Edge Sound
1	Cajon & Tambourine	Cajon Bass Reverb	Tambourine
2	Tambourine	Tambourine	Tambourine Roll
3	Cajon & Shaker	Cajon Foot	Shaker
4	Caxixi	Caxixi Soft	Caxixi Soft/Hard
5	Dhol	Dhol	Dhol Stick
6	Dhol & Splash	Dhol	Shiny Splash
7	Cajon & Sagat	Cajon Bass Reverb	Sagat
8	Darbuka	Darbuka Don	Darbuka Tec/Ka
9	Bougarabou & Djembe	Bougarabou	Bougarabou/Djembe
0	Surdo	Surdo Mid	Repinique/Surdo Hi

SFX

	Kit Name	Head Sound	Edge Sound
1	Fat Kick	Dubstep Kick	Dubstep Snare
2	Wobble Kick	Jumper Kick	Old School Snare
3	Hybrid 808	Hybrid Kick	TR-808 Snare
4	Afro Stomp	Afro Stomp	Ambient Snare
5	Junk	Roto Tom Hi	Junk
6	Wah Guitar	Wah Guitar Up	Wah Guitar Down
7	Pot Drum	Pot Drum Hole	Pot Drum Heel
8	Timbales	Timbale Mid	Timbale Hi/Hi Rim
9	Clave & Chime	Clave	Tree Chime
0	Scratch & Voice	Scratch	Voice Yeah

Performance Advice

When you want to increase the overall sound of the ELCajon

We recommend that you place a mic in front of the speaker hole and bass-reflex port of the ELCajon's striking surface (front panel), and connect the mic to an amp or PA system.

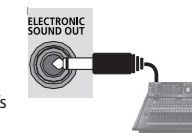
The mic will pick up the original acoustic sound as well as the electronic layer sound heard from the ELCajon's speakers.



When you want to increase the sound of the electronic layer (in particular the low frequencies)

Using the ELECTRONIC SOUND OUT jack located on the ELCajon's rear panel, output the electronic layer sound to an external amp or PA system.

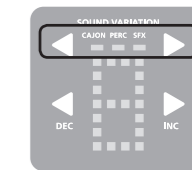
Use the controls of the PA system to adjust the volume of the ELCajon's sound that is output from the PA system.



When you don't want the electronic layer sound to be output

If you press the two left and right sound group select buttons simultaneously, the electronic layer sound is immediately muted. Repeat this action to unmute the sound.

This lets you turn mute on/off as appropriate for your song, for example when you want to stop playing the electronic layer at a certain point in the song.



If you want to conserve battery power

- Turn off the power when you're not playing the instrument.
- If you connect an external audio device to the MIX IN jack and use the ELCajon to continuously play back music while you perform, the batteries will be used more heavily than during conventional performance. If you will be playing back music for an extended time, you should supply power from the AC adaptor or play your audio device through the PA system.



Main Specifications

Roland EC-10: Electronic Layered Cajon (ELCajon)	
Power Supply	AC adaptor (DC 5.7 V) Alkaline battery (AA, LR6) x 6
Current Draw	250 mA
Expected battery life under continuous use	Normal use: Approx. 12 hours Maximum load use: Approx. 6 hours * These can vary depending on the specifications of the batteries, capacity of the batteries, and the conditions of use.

Dimensions	295 (W) x 298 (D) x 495 (H) mm 11-5/8 (W) x 11-3/4 (D) x 19-1/2 (H) inches
Weight (including batteries)	6.0 kg 13 lbs 4 oz
Accessories	Owner's manual, Leaflet "USING THE UNIT SAFELY", AC adaptor

* In the interest of product improvement, the specifications and/or appearance of this unit are subject to change without prior notice.