



JUPITER-80 Release Note

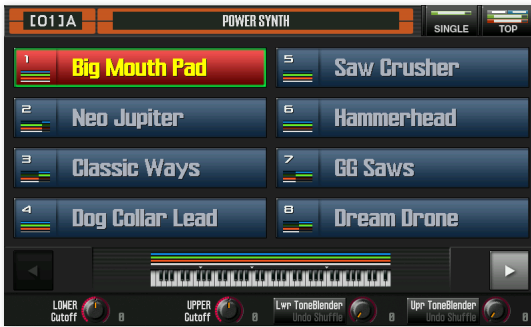


JUPITER-80—All About Version 2

© 2012 Roland Corporation U.S.
All rights reserved. No part of this publication may be reproduced in
any form without the written permission of Roland Corporation U.S.

JP80RNV2

Welcome to the JUPITER-80, Version 2



With the Version 2 operating system software upgrade, the Roland JUPITER-80 becomes an even more powerful instrument. Here's what Version 2 brings to the JUPITER-80:

- *New, cutting-edge sounds*—We've added new internal tones, live sets, and registrations to make the JUPITER-80's sound set even more exciting. (A Version 2 sound list document is included with the Version 2 updater file.)
- *The Registration Play screen*—This new screen makes it easier than ever to find registrations, and to jump into Single Part Play mode for playing live sets. (To read about this now, click [here](#).)
- *Three new low-pass filters*—We've added three new vintage low-pass filter types to the SuperNATURAL synth tone, making the synth engine even more of a sound designer's dream. (To jump to this section, click [here](#).)
- *New MFX Combinations*—With Version 2, the MFX can be arranged parallel to each other (as in Version 1), or in one of four other configurations, allowing you to take greater advantage of their processing power by combining MFX in new and interesting ways. (To read about this now, click [here](#).)
- *The JUPITER-80 as SONAR Controller*—By simply activating the new ACT feature, the JUPITER-80 becomes a control surface for Cakewalk by Roland's SONAR digital audio workstation. (To jump to more information on this, click [here](#).)

About This Booklet

This booklet explains how to install Version 2 on your JUPITER-80, and how to use the new Version 2 features.

Understanding the Symbols in This Booklet

Throughout this booklet, you'll come across information that deserves special attention—that's the reason it's labeled with one of the following symbols.



A note is something that adds information about the topic at hand.



A tip offers suggestions for using the feature being discussed.



Warnings contain important information that can help you avoid possible damage to your equipment, your data, or yourself.

This booklet is designed to be read in order from beginning to end. However, if you see this link button—you can click it to jump immediately to a related section in this booklet.



Checking Your JUPITER-80's System Version

If you've just purchased your JUPITER-80, you may already be running the Version 2 software or higher. Here's how to find out.

- 1 Power on the JUPITER-80.
- 2 Press the MENU button.
- 3 Touch System.
- 4 Touch the Information tab at the bottom of the screen to reveal the system version. If you see
 - a *system version number lower than 2.00*—continue with the installation instructions in this booklet.
 - *"2.00" or higher*—you've already got Version 2 installed.

Installing Version 2

Getting Ready to Upgrade

We recommend performing a backup of your JUPITER-80's internal memory to a USB thumb drive before upgrading to Version 2. There are two reasons:

- *The new Version 2 sounds replace the old ones*—Version 2 replaces the original JUPITER-80 internal tones, live sets, and registrations with a fresh sound set. A backup preserves the original JUPITER-80 collection of sounds, allowing you to reload them whenever you like.
- *You may have personal User data you want to preserve*—If you've been using the JUPITER-80 for a while, odds are that you've stored some of your own data in its User memory. You may have saved
 - registrations
 - live sets
 - tones
 - system settings that customize the JUPITER-80's setup

Backup Strategies

There are two ways to save your current data onto a thumb drive:

- *You can save the entire contents of internal memory*—using the JUPITER-80's Backup tool. This is the way to go to preserve the JUPITER-80's original sound set.
- *You can back up specific registrations, live sets, and tones*—if you have specific sounds you want to hang onto.

Formatting a USB Thumb Drive for the JUPITER-80

- 1 With the JUPITER-80's power off, connect a thumb drive to the jack in the front-panel USB MEMORY•SONG PLAYER/RECORDER compartment.
- 2 Turn on the JUPITER-80.



- 3 Press the MENU button to display the MENU window.



- 4 Touch Format USB Memory.
- 5 Touch EXEC to proceed, or CANCEL.
- 6 Touch OK to format the drive, or CANCEL.
- 7 When formatting's complete, touch OK.

Backing Up the JUPITER-80's Entire Internal Memory

After installing your formatted thumb drive in the USB MEMORY•SONG PLAYER/RECORDER compartment, here's how to back up all of your JUPITER-80's internal data as a single backup file on the drive.

You can store a single backup file on each USB thumb drive. If you back up to a thumb drive that already contains a backup file, the new backup file replaces the old one.

- 1 Press the MENU button to display the Menu window.
- 2 Touch Backup.
- 3 Touch EXEC.
- 4 Touch OK to finish saving your backup.

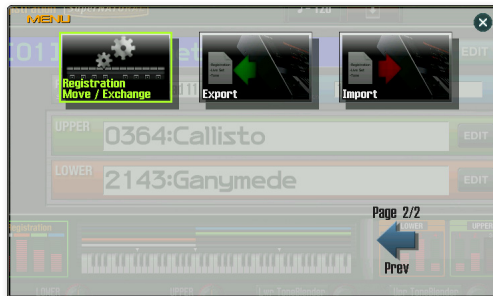
After we explain how to update your JUPITER-80, we'll discuss reloading the data in your backup file.



Backing Up Specific Sounds

After installing your formatted thumb drive in the USB MEMORY•SONG PLAYER/RECORDER compartment, here's how to save, or “export,” specific registrations, live sets, and tones to the thumb drive.

- 1 Press the MENU button to display the MENU window.
- 2 Touch the Page 1/2•Next arrow to display the second page of the MENU window.



- 3 Touch Export to display the Export screen.



You begin by letting the JUPITER-80 know what type of sound it is you want to export to your thumb drive.

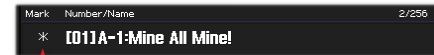
- 4 Start selecting the type of sound you want to export by touching the appropriate sound-type tab at the bottom of the screen. Touch
 - *Registration*—to display a list of the registrations currently stored the JUPITER-80's internal memory.
 - *Live Set*—to display a list of the live sets currently stored in the JUPITER-80's internal memory.
 - *Tone*—to display a list of the tones currently stored in the JUPITER-80's internal memory.



When you export a registration, the live sets and tones it uses are exported along with it to ensure the registration sounds the same when it's brought back into the JUPITER-80.

The JUPITER-80 exports any sound that has a mark—and asterisk—to its left.

- 5 To
 - *mark an individual sound for export*—touch the sound to highlight it, and then touch **Mark** to place an asterisk to the left of the sound.



We've marked this registration for export.

- *unmark a currently marked sound*—touch the sound to highlight it, and then touch **Mark**.
- *mark all of the sounds in the displayed list for export*—touch **Mark All** to asterisk all of the sounds in the list at once.



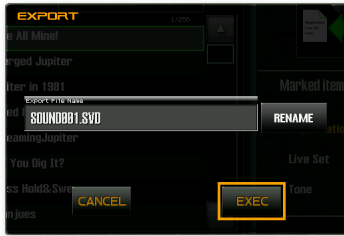
To quickly see which of the sounds in a list are marked, touch the Search Mark ▲ and ▼ buttons to jump up or down in the list from marked sound to marked sound.





You can jump between the Registration, Live Set, and Tone lists to mark different types of sounds to be exported together.

- Once you've marked all the desired sounds, touch the **Export** button—the JUPITER-80 presents you a screen from which you can name the exported sound data file.



- Touch **Name** to display a keyboard with which you can give the file a new name, and then touch **OK** when you're done.
- Touch **EXEC** to finish exporting the marked sounds to your thumb drive.

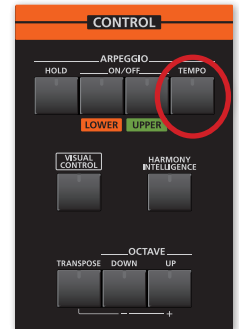


You can use a thumb drive that contains other JUPITER-80 data, including a backup file, as long as there's room for the Version 2 updater file, which is 13-14 MB in size.

- In the downloaded Version 2 folder, you'll find the `jp80_up.bin` file—this is the actual updater file.
- Drag the `jp80_up.bin` file directly onto the thumb drive's icon to copy the file to the thumb drive's top-level, or "root," directory. (Don't place it in the Roland folder on the thumb drive.)
- Safely eject the thumb drive from your computer as you would any other removable USB device.

Performing the Version 2 Upgrade

- Power down the JUPITER-80.
- Insert the thumb drive containing the updater file into the jack beneath the USB MEMORY•SONG PLAYER/RECORDER panel.
- While holding down the **TEMPO** button in the **CONTROL** area of the JUPITER-80's front panel, turn on the JUPITER-80.
- Continue holding down **TEMPO** until you see "Update Mode" on the JUPITER-80 display, and then release the button.



- The update takes a few minutes, at the end of which the JUPITER-80 displays "Finished."
- Turn the JUPITER-80 off.
- Remove the thumb drive. (You can now return the thumb drive to your computer and delete the updater file.)
- Turn the JUPITER-80 back on.



After we show you how to update your JUPITER-80, we'll explain how to import your sounds.



Preparing the Upgrade File

We're going to assume you're reading this booklet because it accompanied the Version 2 updater file you downloaded from RolandUS.com. If you haven't already downloaded the updater, do so now, and unzip the file on your computer.



- Insert a USB thumb drive that's been formatted for the JUPITER-80—if you need formatting instructions, see page 3—into an unused USB port on your computer, and locate the drive's icon on your computer.

Performing a Factory Reset

To install the new Version 2 sounds after updating the operating system, perform a Factory Reset.



If you'd like to retain all of the Version 1 sounds while taking advantage of Version 2's features, *don't* perform a Factory Reset. Of course, if you backed up your older sounds prior to updating, you can try out the Version 2 sounds and then restore them—or any individual sounds you've exported—any time you like.

- 1 Press the MENU button.
- 2 Touch Factory Reset.
- 3 Touch EXEC.
- 4 Touch OK to install the JUPITER-80 Version 2 sound set.



Reloading Backup Data and Exported Sounds

Restoring Backup Data

If you backed up all of your internal data before updating the JUPITER-80, you can reload it using the following steps.



If you've saved any tones, live sets, or registrations—or changed any system settings—that new data will be replaced by your backup data as it's reloaded into your JUPITER-80, unless you back it up first.

- 1 Turn off the JUPITER-80 and install the thumb drive containing your backup file in the USB MEMORY•SONG PLAYER/RECORDER compartment.
- 2 Turn on the JUPITER-80.
- 3 Press the MENU button.
- 4 Touch Restore.
- 5 Touch EXEC.
- 6 Touch OK to reload the data in the backup file.



Importing Exported Sounds

Here's how to reload sounds you exported prior to updating your JUPITER-80.

- 1 Turn off the JUPITER-80 and insert the thumb drive containing your exported sounds into the jack in the USB MEMORY•SONG PLAYER/RECORDER compartment.
- 2 Turn on the JUPITER-80.
- 3 Press the MENU button, and then touch the Page 1/2•Next arrow to display the second page of the MENU window.



Version 2's second MENU screen has some new options.

- 4 Touch the Import button to display the Import screen.



- 5 Touch the sound file you'd like to import.

In the File Information panel at the right of the screen, the JUPITER-80 shows you the registrations, live sets, and tones contained in the selected sound file.



- 6 Touch **Select** to display the Import screen where you choose the sounds to be imported.
- 7 Mark any registration you wish to import so that an asterisk appears to the left of its name.



All live sets and tones used by a marked registration are automatically tagged with a “+” for import.

- 8 If you want to import live sets or tones, touch the appropriate sound-type tab, and then mark any live set or tone you wish to import so it's asterisked.
- 9 When you've finished marking sounds, touch **Import**.

The JUPITER-80 presents you a list of its internal memory locations. This is where you choose the locations in which the imported sounds are to be stored.



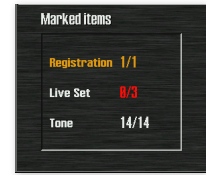
By default, the JUPITER-80 offers locations named “INIT,” based on the assumption they're empty—this is one good reason why you should name your customized sounds.



- 10 Moving between the sound types using the tabs at the bottom of the screen, select location destinations for the sounds you're importing.



Be sure to select the number of registration, live set, and tone locations you need to for the number of registrations, live sets, and tones you're importing. The Marked Items panel at the right of the screen tells you how many memory locations you need.



Here we've marked one out of one required registration location, 0 out of 3 live set locations, and 14 out of 14 tone locations. The live set numbers are red to show that we need to mark more live set locations.

- 11 When you've finished marking the memory locations, touch **Execute**, and then **OK** to import your sounds.

The Registration Play Screen



When the JUPITER-80 starts up in Version 2, by default it displays the Registration Play screen. This screen provides some handy tools.

- **Sound set, letter, and name of the current registration bank**—This shows the sound-set number, bank letter, number and name of the currently selected registration bank. Bank names are new in Version 2.



You can jump rename registration banks by touching the Registration Bank Name button on the second MENU screen.

- **Registration buttons**—Touch any of these buttons to select its registration.
- **SINGLE button**—Touch this to jump to the SinglePartPlay screen so you can play a single live set by itself. When a single live set is currently selected, the SINGLE button turns red to show you that you can select live sets using the JUPITER-80's colored buttons. When a registration's selected, the SINGLE button is black.

- **TOP Button**—Touch TOP to jump to the main page of the currently selected sound. If a
 - *a live set is currently selected*—touching TOP takes you to the SinglePartPlay screen.
 - *a registration is selected*—touching TOP takes you to the Registration's main screen, where you can see its details.
- **Bank Back and Forward buttons**—touch these to navigate between the JUPITER-80's registration banks.
- **Lower and Upper Part Cutoff knobs**—These adjusts the Cutoff values in the Lower or Upper part's live set.
- **Lower and Upper Part ToneBlender knobs**—Turn these knobs to change a pre-set group of important sound settings in the Lower or Upper part's live set with the ToneBlender feature. Press the knob to experiment with random value changes for these parameters using the ToneBlender's Shuffle feature. Shuffle can be a great way discover new, unexpected sounds.



In Version 2, both the SinglePartPlay and main Registration screens have a new **Registration Play** button you can touch to return to the Registration Play screen.

The SuperNATURAL® Synth Tone Low-Pass Filters

A synth's low-pass filter is an important factor in its sound, and the SuperNATURAL synth tone at the heart of the JUPITER-80 just got three brand-new low-pass filters, for a total of four. Each of these three new filters gets you the sound of a specific classic synthesizer, including Roland's own JUPITER-8 low-pass filter, which is LPF2. (LPF1 is the JUPITER-80's original low-pass filter.)



You'll find the new low-pass filters in the FILTER section of any synth tone's Synth Tone Edit screen.

Combining MFX in Version 2

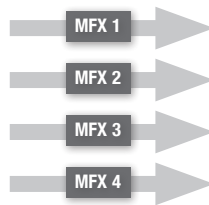
Powerful as the JUPITER-80's live-set MFX are on their own—running side-by-side—there's a whole world of new sonic possibilities when you combine them, one after another, in a series, causing one effect to affect another. In Version 2, we've added new live set MFX configurations that make the MFX more flexible than ever.

You get to the configurations by touching the STRUCT button on the Live Set Effects Routing screen.



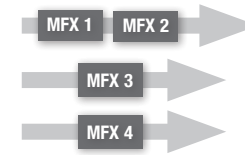
With the STRUCT button highlighted as shown above, turn the VALUE dial to select, or press ENTER and touch, the desired MFX configuration. Here's how audio—shown as a light gray arrow—flows through the MFX in each combination.

- *Structure 1*—MFX 1-4 are all processing audio separately, in parallel.

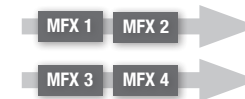


This is the JUPITER-80's original MFX configuration.

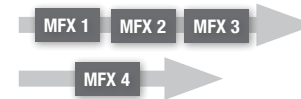
- *Structure 2*—MFX 1's output is going into MFX 2. MFX 3 and 4 are running separately from each other and from the combined MFX 1/2.



- *Structure 3*—MFX 1's output is going into MFX 2. MFX 3's output is going into MFX 4. The MFX 1/2 combination and MFX 3/4 combination are running separately from each other.



- *Structure 4*—MFX 1's output is going into MFX 2, and MFX 1/2's output is going into MFX 3. MFX 4 is operating separately from the MFX 1/2/3 combination.



- *Structure 5*—All four MFX are running in a series, with MFX 1's output going into MFX 2, MFX 1/2's output going into MFX 3, and MFX 1/2/3's output going into MFX 4.



Controlling SONAR with the JUPITER-80

If you use Cakewalk by Roland's popular SONAR digital audio workstation, you can now use the JUPITER-80 as a control surface, allowing you to operate SONAR using the JUPITER-80's sliders, buttons, and knobs. A USB MIDI connection between the JUPITER-80's rear-panel USB COMPUTER jack and your computer makes this especially easy to do.

Since the JUPITER-80 and SONAR communicate via USB MIDI, you'll need to have installed the JUPITER-80's USB driver on your computer before proceeding. You'll find the latest driver for your version of Windows [here](#). Download and install the driver according to the instructions included in the download file.

About ACT

ACT—short for “Active Controller Technology”—allows you to control SONAR from a remote device such as the JUPITER-80 with minimal setup and configuration.

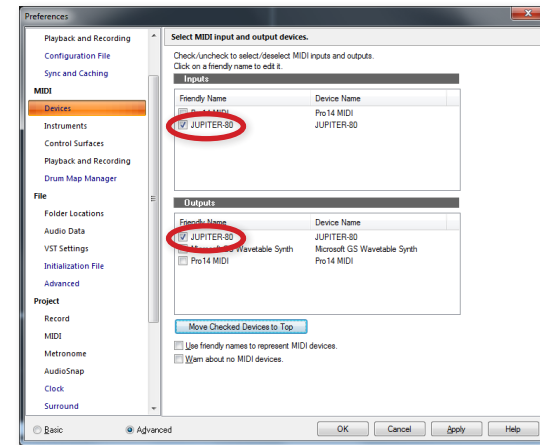
Preparing SONAR for JUPITER-80 Control

We're going to assume that you've installed the JUPITER-80's USB driver, and that the JUPITER-80 is now connected to your computer via USB.

Here's how to set up SONAR:

- 1 You can find the JUPITER-80 control surface driver for SONAR by clicking [here](#).
- 2 Download the file to your computer, and unzip it to your desktop. This produces the Jupiter-80_Setup.exe file.
- 3 Double-click the Jupiter-80_Setup.exe file and follow the onscreen instructions to install the control surface driver.
- 4 After installation completes, launch SONAR.

- 5 In SONAR's Edit menu, select “Preferences...”, and then select the MIDI Devices tab.

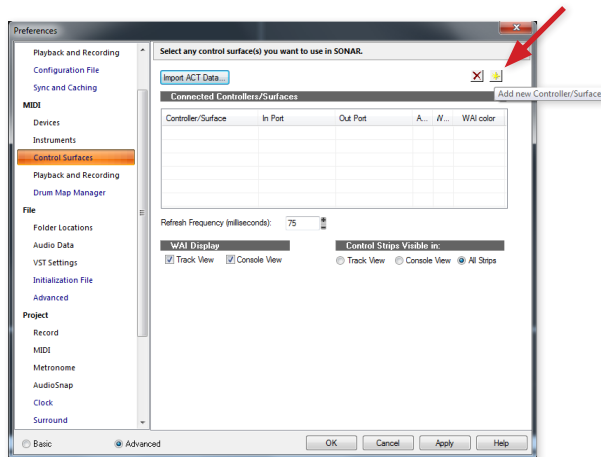


- 6 If they're not already selected, select the JUPITER-80 as SONAR's MIDI Input and Output, as shown above, and click Apply.
- 7 On the JUPITER-80, press MENU, touch the Page 1/2•Next arrow, and then touch the ACT button to display the JUPITER-80's ACT screen.



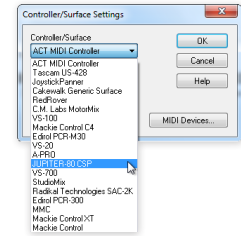
- 8 Touch the ACT ON/OFF button so it lights red to turn ACT on.

- 9 Set Mode to
 - *ALL*—to control SONAR using the JUPITER-80’s PART BALANCE LEVEL sliders and buttons, knobs under the display, and the SONG PLAYER/RECORDER buttons. If you don’t need the PART SELECT sliders and buttons or the knobs for the JUPITER-80 sounds you’re playing, this is the setting you want.
 - *SONG PLAYER RECORDER ONLY*—to use only the SONG PLAYER/RECORDER buttons for controlling SONAR. This setting leaves the other controls free for manipulating sounds you’re playing the JUPITER-80.
- 10 Set the TX MIDI Channel value to the desired MIDI transmission channel if you need to change it from its default setting for some reason. Most of the time, though, Channel 1 is fine.
- 11 Set Local Sw (“Switch”) to
 - *On*—if you’d like to play the JUPITER-80 keyboard as you control SONAR.
 - *Off*—if you’d like to lock out the keyboard for playing as you use the JUPITER-80 as SONAR’s control surface.
- 12 In SONAR, select the MIDI Control Surface tab, and then click the yellow Add MIDI Controller button.



The Controller Surface/Settings window opens.

- 13 Click the **Controller/Surface** button and select “JUPITER-80 CSP” from the popup menu.
- 14 Release the popup, and then click OK.
- 15 Click OK to leave the Preferences window.



The JUPITER-80 now appears as the ACT control surface in the ACT pane of the control bar, and the JUPITER-80’s sliders, buttons, and knobs are in control of the designated SONAR settings.

To see a map of the SONAR settings controlled by the JUPITER-80—and to customize the settings if you like—click the **Controller/Surface Properties** button belonging to the ACT panel in SONAR’s control bar.



This opens the JUPITER-80 control surface plug-in’s window.



The End

We hope you’ve found this ReleaseNote helpful. Keep an eye out for other JUPITER-80 publications available for downloading at www.RolandUS.com.