

Motorized faders for live performance
Latest cutting-edge patterns and sounds
Built-in sampling with expansion
High-resolution pattern sequencer
USB / MIDI file transfer and editing

Motorized faders for live performance

- **Eight motorized faders give you instant feedback of settings.**
- **Separate fader layers for controlling level, pan and patch parameters.**
- **Record and playback automation of pattern and patch parameters.**

Latest cutting-edge patterns and sounds

- **256 new patterns created by leading artists from around the world.**
- **Fantom X series sound engine with 128-note polyphony for involved patterns.**
- **896 patches and 128 rhythm sets from newly updated MC-808 waveforms.**
- **Easy editing of patch and pattern parameters using the 808's motorized faders**

Built-in sampling with expansion

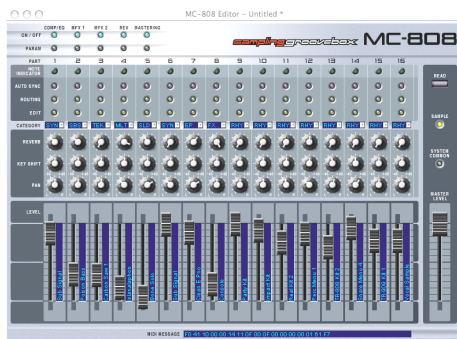
- **Pro sampling features including CHOP and AUTO BPM SYNC of loops.**
- **Flexible resampling of patterns and samples through the 808's on-board effects**
- **Complete editing of 808 samples with PC/Mac using bundled editor.**
- **4MB sampling time, expandable to 516MB (over 102 min.) with DIMM.**

High-resolution pattern sequencer

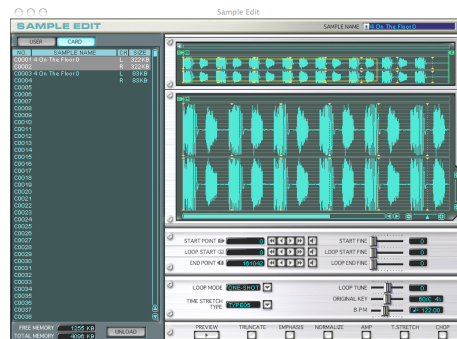
- **Easy drum machine like sequencing for both MIDI and samples.**
- **71 different groove templates give your pattern the right feel for your music.**
- **Use the motorized faders to automate changes to pattern parameters.**

USB file sharing and editing

- **Import WAV/AIFF files or export to PC/Mac for backup or CD burning.**
- **Powerful USB Editor for graphic editing of patches and samples:**



Multitimbral Part Editor



Sample Editor

BEFORE YOU DEMO THE 808, RESET IT FIRST TO ITS FACTORY CONDITION:

Note: This will ERASE user patterns and patches, returning them to their factory preset.)

- 1) In the **MODE** section, press the **SYSTEM** button.
- 2) Hold down the **SHIFT** button and press **VELOCITY PAD #16**.
- 3) Press **ENTER** twice to begin the reset process.

NOTE: DO NOT TURN OFF THE POWER DURING THE RESET PROCESS!

- 4) When prompted, power off the MC-808, then power it back up.

SHOW THE PATTERN AND PERFORMANCE FEATURES OF THE MC-808:

Show the patterns in the MC-808:

- 1) Use the **VALUE DIAL** to scroll to pattern "001: SuperGrime!".
- 2) Press **ENTER** to select the pattern.
- 3) Press **PLAY** in the "SEQUENCER" section to start pattern playback.
- 4) You can instantly advance to the next pattern by pressing the **RIGHT CURSOR**.

Moving fader automation is unique to the MC-808. Here's how to show the moving faders:

- 1) Use the **DIAL** to scroll to pattern "001: SuperGrime!". Press **ENTER**.
- 2) Press the **PART ASSIGN** button so it's NOT lit. You'll see automation for parts 1-8.

The MC-808 has a unique real-time "turntable" emulation feature for live performance:

- 1) If the pattern isn't playing, press the **PLAY** button.
- 2) In the **D-Beam** section, press the **TURNTABLE** button so it is lit.
- 3) Raise or lower your hand over the **D-Beam** to slow-down or speed-up playback.

SHOW HOW TO SEQUENCE A NEW PATTERN:

- 1) Hold the **SHIFT** key and turn the **VALUE DIAL** to scroll to **Pattern #800**.
- 2) Press **ENTER** to select the pattern.
(Begin by sequencing a simple drum part.)
- 3) Press **PART SELECT** so it is NOT lit.
- 4) Press the **SELECT** button for **Part #10**.
- 5) Use the velocity pads to check out the patch, "TR-909 Kit 1", for **Part #10**.
- 6) To select a different drum kit or patch, press **PATCH/SAMPLE** in the **MODE** section.□
- 7) Use the **DIAL** to scroll through patches and the pads to audition them.
- 8) When finished, press **PATTERN** in the **MODE** section.
- 9) Press **REC**, then **PLAY** twice. After the 2 bar count off, begin recording your part.
- 10) To erase a mistake, hold down **UNDO/ERASE** and the pad(s) for as long as you played the notes.
- 11) When finished, press **STOP**, then **PLAY** to hear your new part.
- 12) To sequence other parts, repeat Steps 4 through 11.