

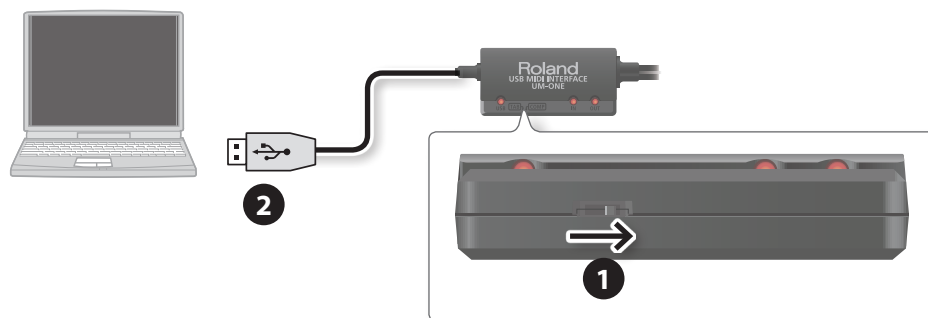
About the UM-ONE mk2's [COMP/TAB] Switch

The [COMP/TAB] switch needs to be placed at the setting that's appropriate for the device to which you're connecting the UM-ONE mk2.

Switch position	Connected device
COMP	For connecting a computer. Refer to "Using the UM-ONE mk2 with a Computer" (p. 1). In order to use the COMP setting, you must install the driver in your computer.
TAB	For connecting an iPad. Refer to "Using the UM-ONE mk2 with an iPad" (p. 2). Driver installation is not necessary.

Using the UM-ONE mk2 with a Computer

If using the UM-ONE mk2 while connected to a computer, set the UM-ONE mk2's [COMP/TAB] switch to the "COMP" position.



1. Set the UM-ONE mk2's [COMP/TAB] switch to the "COMP" position.
2. Connect the UM-ONE mk2 to the computer.

MEMO

If you want to connect the UM-ONE mk2 to a computer in which the USB driver has not been installed, disconnect the UM-ONE mk2's USB cable from the computer, and install the USB driver in the computer as described in the section "Driver Installation" in the UM-ONE mk2 owner's manual.



Using the UM-ONE mk2 with an iPad

If using the UM-ONE mk2 with an iPad, set the UM-ONE mk2's [COMP/TAB] switch to the "TAB" position.

Before you continue, please make sure to access the following URL and check the operating requirements and other relevant information.

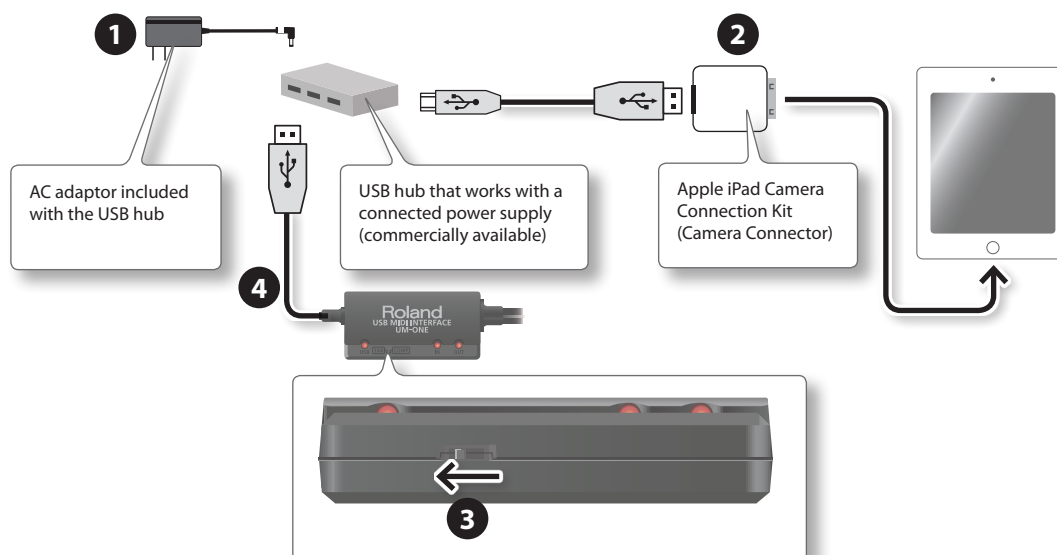
<http://www.roland.com/support/>

NOTE

- The first-generation iPad cannot be used.
- The iPad app you're using must support CoreMIDI.

You'll need to provide the following items

- iPad (made by the Apple Inc.)
- Apple iPad Camera Connection Kit (Camera Connector; made by the Apple Inc.)
- USB hub (commercially available; a type to which an AC adaptor or other power supply is connected)
- USB cable (commercially available)



1. Power up your USB hub (connect the AC adaptor to the USB hub).
2. Connect the USB hub to the iPad using the Camera Connector of the Apple iPad Camera Connection Kit.
3. Set the UM-ONE mk2's [COMP/TAB] switch to the "TAB" position.
4. Connect the UM-ONE mk2 to the USB hub.

MEMO

Operation may be unstable if you use a USB hub of a type that does not have a connected power supply, or if you connect the UM-ONE mk2 directly to the iPad.