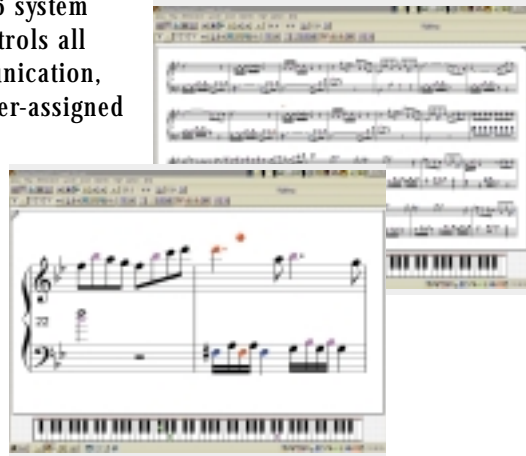


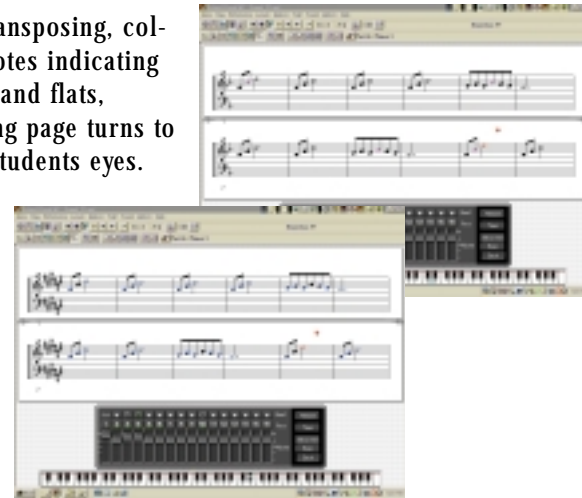
Resizable Notation–Multi Staff

The MTLC-16 system digitally controls all class communication, including user-assigned groups.



Interactive Disks

Easy transposing, colored notes indicating sharps and flats, scrolling page turns to guide students eyes.



Specifications

Stereo music lab communication system

- Stereo audio communication for up to 32 students and one teacher
- Integrated MIDI sequencer and notation program
- Integrated visualized tutorials for up to 32 students and one teacher
- Interactive MIDI features include: SMF playback/recording/printout and student assessment
- PC-controlled gradebook and classroom management, including memorizable class rosters, assignable groups and two-way teacher-student communication
- Visual display options: TV monitors (S-video), flat-panel LCD's or large gas-plasma screens (user-installable options)

Hardware

- Stereo communication console and all necessary connectors, cables headphones/microphones

Software

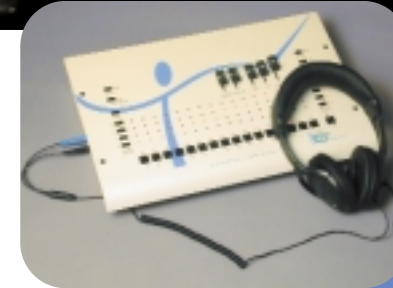
- Virtual MTLC-16 lab controller, Visual Music Tutor (V-MT1) and Virtual SoundCanvas VSC-88H
- Drag-and-Drop classroom management, integrated class roster, gradebook, and adjustable classroom map
- Uses thousands of interactive educational & performance SMFs

Package includes:

- MTLC-16 with UL-approved power supply
- 16 MTLC-1 connector boxes, 16 pre-cut phone-type connector cables, 10 meters in length
- 17 stereo headphone/microphones
- one 4-foot audio cable (1/4" to 1/4") for teacher piano-to-console
- CD-ROM containing Virtual MTLC-16, Visual Music Tutor (V-MT1) and Virtual SoundCanvas VSC-88H
- Complete hardware/software package with "Survivor's Guide," comprehensive Owner's Manual and annotated Group Teaching bibliography

Visualize

A New Dimension in Music Labs

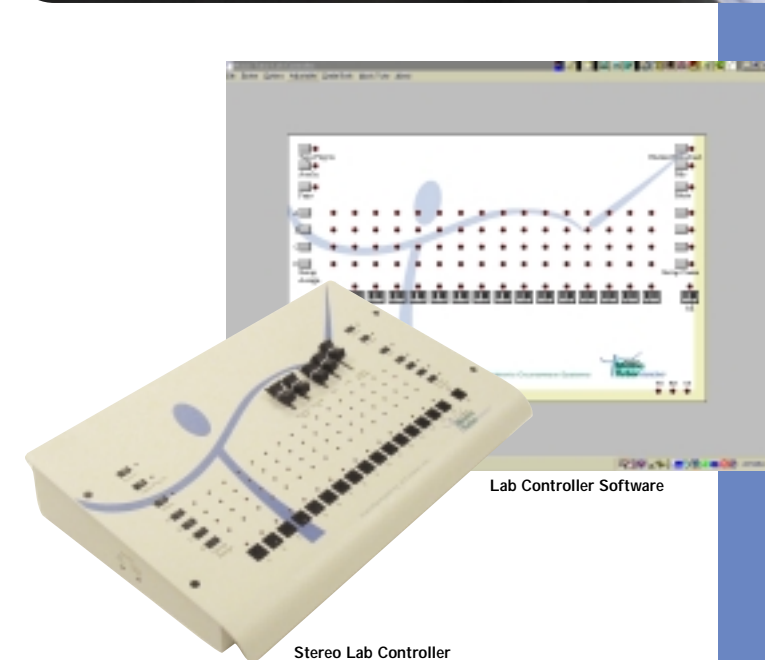


MTLC-16 Music Tutor Lab Controller

An Interactive software assistant for developing stronger music reading skills and effortlessly manage keyboard classes.

 Roland®

MTLC-16 Music Tutor Lab Controller



The Roland Music Tutor Lab package is the first integrated hardware-and-software music instruction system with animated music notation, giving students a lab environment with real-time visualization of music notation.

In addition to a stereo music lab controller and connecting boxes for up to 16 students, the MTLC-16 system provides digital controls, an electronic gradebook, and a computer-based "drag-and-drop" interface for easy classroom management.

The heart of the system, however, is Roland's innovative VMT-1 Visual Music Tutor sequencing and notation software, which employs visual guidance and other learning tools to greatly improve the overall music instruction.

MTLC-16 System Benefits:

- Extends the time-proven benefits of lab instruction, adding stereo instrument sound
- Offers increased educational possibilities with re-sizable visual notation
- Provides open-ended computer expansion and flexibility
- Feature interactive disk-based materials from vast Standard MIDI File catalogs

The MTLC-16 system software digitally controls the lab communication hardware, computerizes record keeping with a "cyber-gradebook", allows drag-and-drop classroom mapping, and memorizes rosters and layouts. The included Roland Visual Music Tutor software provides visual guidance through a "bouncing ball" metronome and "virtual" page turning, fostering solid music reading skills, no matter what level your students are playing.

Virtual Instruction

In addition to visualized Standard MIDI file playback, recording and printout, Visual Music Tutor's instantly re-sizable notation of any Standard MIDI file includes highlighted note heads, and display options including treble, bass or grand staff—letting your class play along to selected music files with ease. For the first time, MIDI sequencing has been integrated into a complete instructional package, supported by the vast library of Standard MIDI Files available on the market.

A Virtual Classroom

The MTLC-16 system digitally controls all class communication, including user-assigned groups. Its integrated visualized tutorials and student assessments are coupled with a PC-controlled gradebook, class rosters, and classroom management. Monitor output connections for TV monitors, flat-panel LCDs or even plasma screens allow you to display the music permanently, according to your budget.



The MTL-16 Communication Console features stereo audio communication for up to 16 students and one teacher, allowing you to instruct more students, more efficiently. Teacher and student interact through stereo headphones/microphones, and student's can interact with each other, building morale. Class settings include individuals, pairs, and four customizable groups.

Interactive Disks

Publishers continue to release new interactive book/disk folios to help guide students at all levels of learning. With these Standard MIDI File disks, the teacher and student can adjust tempo, a patient tutor for every tune—as well as transposition and track muting. This allows students and teachers to focus on their own particular learning challenge.



"Animated" Notation

"Animated" notation guides students' eyes along the digital score to develop solid reading habits and progress quickly. A "bouncing ball" keeps the beat, even through long rests. The highlighted note heads draw the eye along the score, with sharps and flats indicated in color—another practical tutoring feature. And automatic page turning walks students through the entire composition.



Visual Pedagogy

Important musical concepts are introduced and reinforced as eyes are moving along the page: the gentle arc of the "bouncing ball" provides a subtle, musical metronome; staccato vs. legato touches are illustrated by colorful bar graphs—the top showing the SME, the bottom the user/teacher playing; and playing dynamics contours are displayed by both duration (horizontal axis) and velocity (vertical axis) dimensions of a bar graph.

