

Roland



INTEGRA-7 Editor Ver.2 Install Guide

Contents

Installation and Setup (Windows)	3
Installation Procedure.....	3
Uninstallation Procedure	3
Cubase 7.5 Users	4
Device Settings	4
Launching and Setting-Up INTEGRA-7 Editor Ver.2.....	4
SONAR X3 Users.....	5
Device Settings	5
Launching and Setting-Up INTEGRA-7 Editor Ver.2.....	5
Installation and Setup (Mac OS)	6
Installation Procedure.....	6
Uninstallation Procedure	6
Cubase 7.5 Users	7
Device Settings	7
Launching and Setting-Up INTEGRA-7 Editor Ver.2.....	7
Logic Pro X Users	8
Launching and Setting-Up INTEGRA-7 Editor Ver.2.....	8
About the Owner's Manual	9
Opening the Owner's Manual	9

IMPORTANTNOTES



Trademarks and Licenses

- VST is a trademark and software of Steinberg Media Technologies GmbH.
- The Audio Units logo is a trademark of Apple Computer, Inc.
- Roland, SuperNATURAL and INTEGRA are either registered trademarks or trademarks of Roland Corporation in the United States and/or other countries.
- Copyright 2005, 2012 jQuery Foundation, Inc. and other contributors Released under the MIT license.
- Copyright 2013 jQuery Foundation and other contributors; Licensed MIT.
- Microsoft product screen shot(s) reprinted with permission from Microsoft Corporation.
- Company names and product names appearing in this document are registered trademarks or trademarks of their respective owners.

Additional Precautions

- Unfortunately, it may be impossible to restore the contents of data that was stored in the computer once it has been lost. Roland Corporation assumes no liability concerning such loss of data
- In the interest of product improvement, the specifications and/or contents of this package are subject to change without prior notice.

Installation and Setup (Windows)

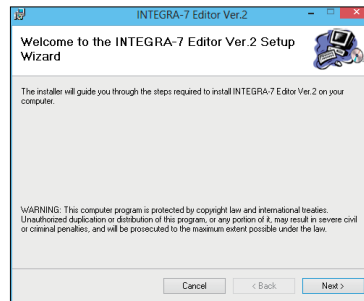
Installation Procedure

Use the following procedure to install INTEGRA-7 Editor Ver.2.

NOTE

- INTEGRA-7 Editor Ver.2 is a 64-bit plug-in. It cannot be installed in 32-bit versions of Windows.
- In order to use INTEGRA-7 Editor Ver.2, you must install the USB driver. Download the USB driver from the Roland website. For details, refer to Readme.htm found in the file that you download. ➔ <http://www.roland.com/support/>
- In order to use INTEGRA-7 Editor Ver.2, you must set the INTEGRA-7's own USB driver setting to "VENDER." Make this setting as described in "Using the INTEGRA-7 with a Computer" in the INTEGRA-7 owner's manual.

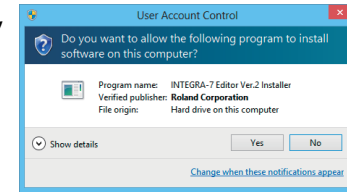
1. Download the INTEGRA-7 Editor Ver.2 installer from the Roland website.
2. Decompress the file that you downloaded, and run "INTEGRA7EditorVer2_x64_en.msi."
3. The "Welcome to the INTEGRA-7 Editor Ver.2 Setup Wizard" dialog box appears. Click [Next].



4. The "Select Installation Folder" dialog box appears. Click [Next] to begin the installation.

5. The "Confirm Installation" dialog box appears. Click [Next] to begin the installation.

If the "User Account Control" dialog box appears, click [Yes].



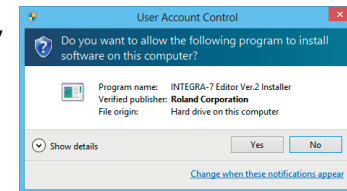
6. The "Installation Complete" dialog box appears. Click [Close] to exit.

Uninstallation Procedure

If you need to uninstall INTEGRA-7 Editor Ver.2, proceed as follows.

1. Run "INTEGRA7EditorVer2_x64_en.msi."
2. The "Welcome to the INTEGRA-7 Editor Ver.2 Setup Wizard" dialog box appears. Choose "Remove INTEGRA-7 Editor Ver.2" and then click [Finish].

If the "User Account Control" dialog box appears, click [Yes].



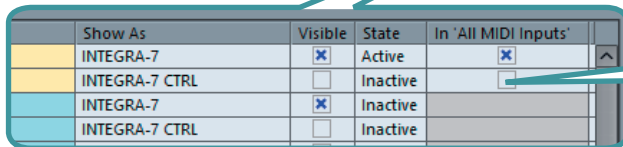
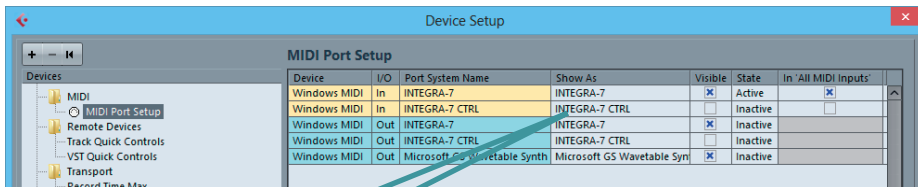
3. The "Installation Complete" dialog box appears. Click [Close] to exit.

Cubase 7.5 Users

If you're using INTEGRA-7 Editor Ver.2 with Cubase 7.5, make the following settings.

Device Settings

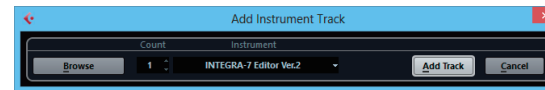
1. Launch Cubase, and open [Devices]-[Device Setup].
2. Access the MIDI Port Setup, and set "INTEGRA-7" and "INTEGRA-7 CTRL" as shown below.



3. Click [OK] to close the "Device Setup" dialog box.

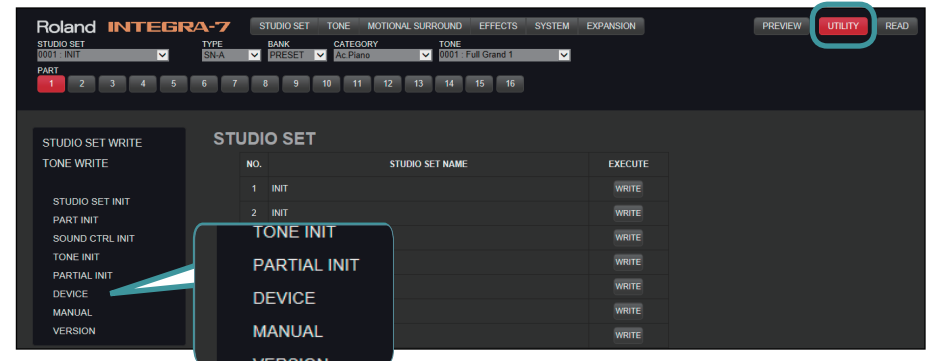
Launching and Setting-Up INTEGRA-7 Editor Ver.2

1. Launch Cubase and create a project.
2. Click [Project]-[Add Track]-[Instrument].
3. In the "Add Instrument Track" dialog box, choose [INTEGRA-7 Editor Ver.2]; then click [Add Track] to plug-in the editor.



INTEGRA-7 Editor Ver.2 launches.

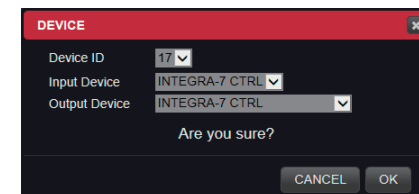
4. Click the [UTILITY] button, and then click [DEVICE].



The "DEVICE" dialog box appears.

5. As the Input Device and the Output Device, choose "INTEGRA-7 CTRL" and then click [OK].

This completes the settings.

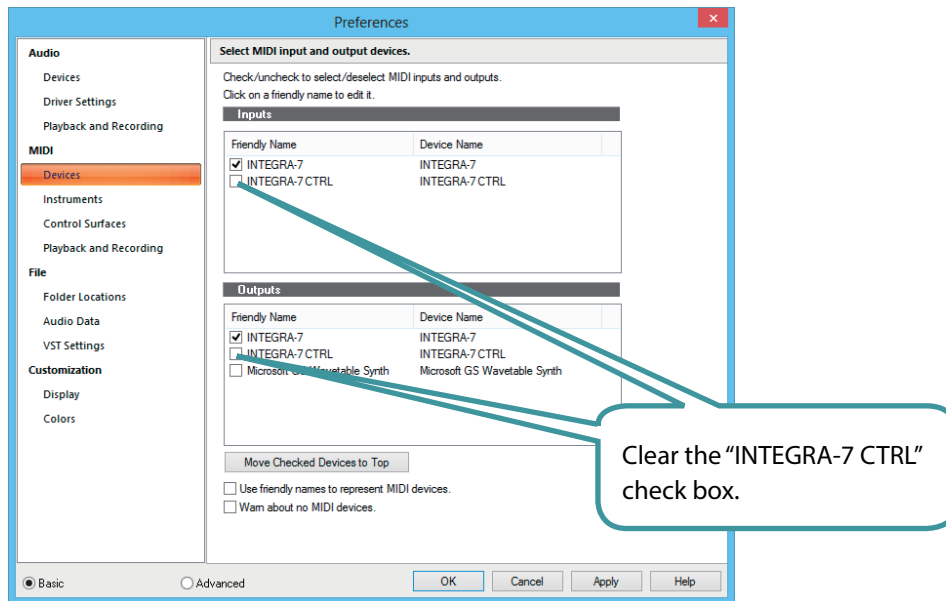


SONAR X3 Users

If you're using INTEGRA-7 Editor Ver.2 with SONAR X3, make the following settings.

Device Settings

1. Launch SONAR, and open [Edit]-[Preferences].
2. Click [MIDI]-[Devices]; then choose "INTEGRA-7" for input and output, and click [Apply].



3. Click [Close] to close the "Preferences" dialog box.

Launching and Setting-Up INTEGRA-7 Editor Ver.2

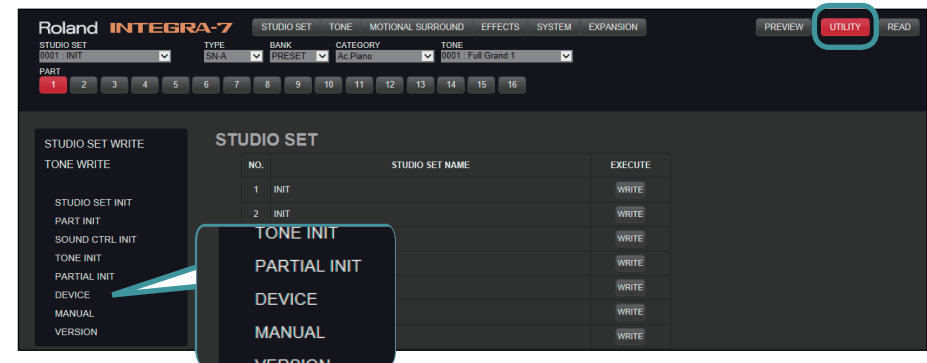
1. Create a project; then click [Insert]-[Soft Synth]-[VST3]-[INTEGRA-7 Editor Ver.2] to plug-in the editor.



2. The "Insert Soft Synth Options" dialog box appears. Select the check boxes "Simple Instrument Track" and "Synth Property Page"; then click [OK].

INTEGRA-7 Editor Ver.2 launches.

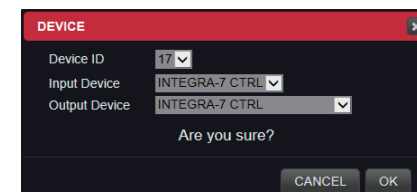
3. Click the [UTILITY] button and then click [DEVICE].



The "DEVICE" dialog box appears.

4. Choose "INTEGRA-7 CTRL" for both Input Device and Output Device, and click [OK].

This completes the settings.



Installation and Setup (Mac OS)

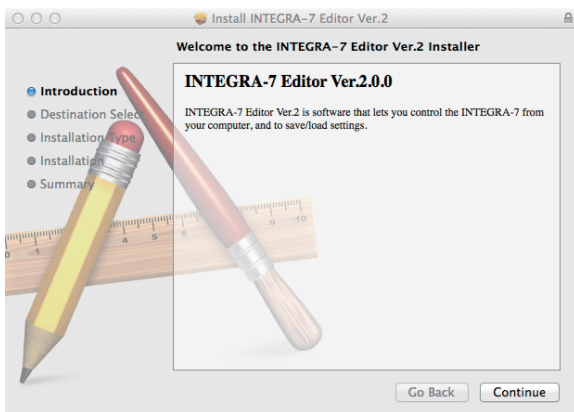
Installation Procedure

Use the following procedure to install INTEGRA-7 Editor Ver.2.

NOTE

- INTEGRA-7 Editor Ver.2 is a 64-bit plug-in. It will not work with a 32-bit DAW or with a DAW that was started in 32-bit mode.
- In order to use INTEGRA-7 Editor Ver.2, you must install the USB driver. Download the USB driver from the Roland website. For details, refer to Readme.htm found in the file that you download. ➔ <http://www.roland.com/support/>
- In order to use INTEGRA-7 Editor Ver.2, you must set the INTEGRA-7's own USB driver setting to "VENDER." Make this setting as described in "Using the INTEGRA-7 with a Computer" in the INTEGRA-7 owner's manual.

1. Download the INTEGRA-7 Editor Ver.2 installer from the Roland website.
2. Decompress the file that you downloaded, and run "Integra7EditorV2_Installer.pkg."
3. The "Welcome to the INTEGRA-7 Editor Ver.2 Installer" dialog box appears. Click [Continue].



If a screen asks you to select the install destination, click the drive on which the system is installed, and then click [Continue].

4. The available installation types are shown. Click [Install] or [Upgrade].
 - * If the screen asks for authentication, enter your password and click [Install Software].
5. The "The installation was completed successfully" dialog box appears. Click [Close] to complete the installation.

Uninstallation Procedure

INTEGRA-7 Editor Ver.2 is installed in the following locations.

- AU version: [Library] - [Audio] - [Plug-Ins] - [Components]
- VST version: [Library] - [Audio] - [Plug-Ins] - [VST3] - [Roland]

To uninstall the AU version, delete "INTEGRA7EditorV2.component."

To uninstall the VST version, delete "INTEGRA7EditorV2.vst3."

Cubase 7.5 Users

If you're using INTEGRA-7 Editor Ver.2 with Cubase 7.5, make the following settings.

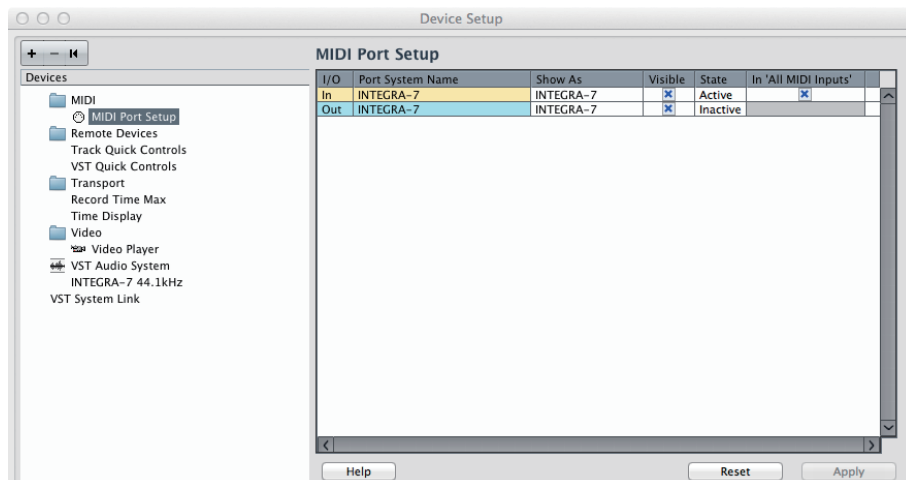
NOTE

INTEGRA-7 Editor Ver.2 is a 64-bit plug-in.

It will not work with 32-bit versions of Cubase 7.5.

Device Settings

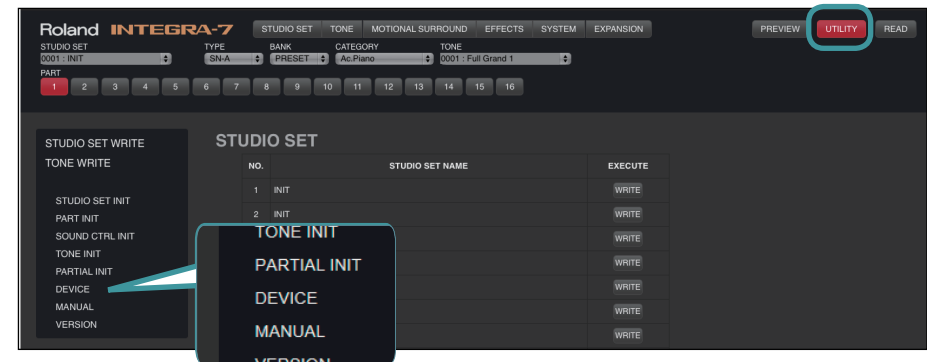
1. Launch Cubase, and open [Devices]-[Device Setup].
2. Access the MIDI port settings, and make sure that "INTEGRA-7" is shown.



3. Click [OK] to close the "Device Setup" dialog box.

Launching and Setting-Up INTEGRA-7 Editor Ver.2

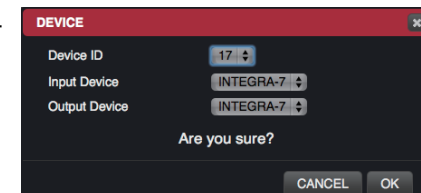
1. Launch Cubase, and create (or open) the project in which you want to use "INTEGRA-7 Editor Ver.2."
2. Click [Project]-[Add Track]-[Instrument].
3. In the "Add Instrument Track" dialog box, choose [INTEGRA-7 Editor Ver.2]; then click [Add Track] to plug-in the editor.
INTEGRA-7 Editor Ver.2 launches.
4. Click the [UTILITY] button and then click [DEVICE].



The "DEVICE" dialog box appears.

5. Choose "INTEGRA-7" for both Input Device and Output Device, and then click [OK].

This completes the settings.

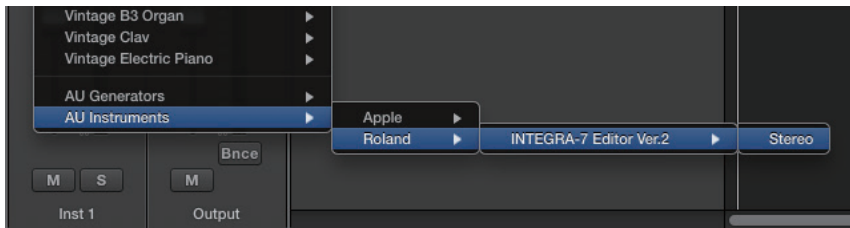


Logic Pro X Users

If you're using INTEGRA-7 Editor Ver.2 with Logic Pro X, make the following settings.

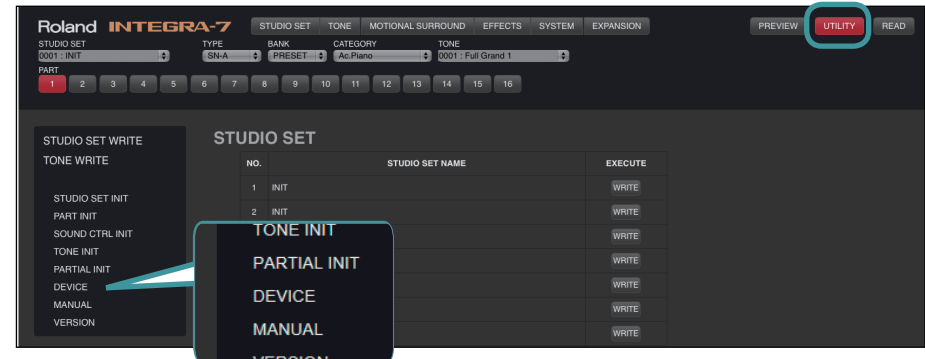
Launching and Setting-Up INTEGRA-7 Editor Ver.2

1. Launch Logic Pro X, and create (or open) the project in which you want to use "INTEGRA-7 Editor Ver.2."
2. Click [Track]-[New Software Instrument Track].
3. In the inspector channel strip of the track you clicked, click the instrument module slot; then click [AU Instruments]-[Roland]-[INTEGRA-7 Editor Ver.2]-[Stereo] to plug-in the editor.



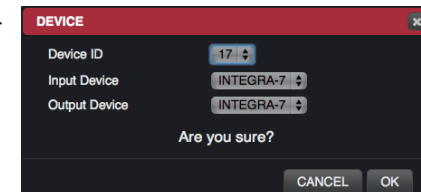
INTEGRA-7 Editor Ver.2 launches.

4. Click the [UTILITY] button and then click [DEVICE].



5. The "DEVICE" dialog box appears.
6. Choose "INTEGRA-7" for both Input Device and Output Device, and then click [OK].

This completes the settings.



About the Owner's Manual

INTEGRA-7 EDITOR Ver.2 includes a PDF-format owner's manual.

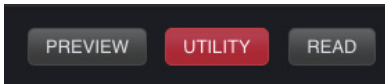
You can open the owner's manual as described in "Opening the Owner's Manual," below.

MEMO

You'll need Adobe Reader (free of charge) in order to view the owner's manual.

Opening the Owner's Manual

1. Plug-in INTEGRA-7 EDITOR Ver.2 into your DAW.
2. Click the [UTILITY] button.



3. In the list at the left of the screen, click [MANUAL].

